

## **DOP-opoly Monthly Incentives**

2021

### **ANYTIME POINTS**

Schedule a Growth + Expansion “ZOOM” Presentation with me and receive (5) points

#### ***D-O-P-opoly Incentive for January***

Pay your **2021** National Obligations **by JANUARY 31**, receive (3) points and move (3) spaces

#### ***D-O-P-opoly Incentive for February***

In honor of Valentines Day and “For the Love of the Daughters”, for each new Initiate, you will get to move (2) spaces (*Double Point month*)

#### ***D-O-P-opoly Incentive for March***

Greek Independence Day- Move (1) Space when you show your Hellenism on Social Media and send me a picture

Pay your entire chapter’s **2021** Per Capita **by MARCH 31**, receive (5) points and move (5) spaces

#### ***D-O-P-opoly Incentive for April***

The next Penelope Scroll is due *May 15*

Remit an article **by APRIL 30**, showcase your chapter, and move (2) spaces

#### ***D-O-P-opoly Incentive for May***

AHEPA Sunday is a very special day for the AHEPA Family

For the entire month of May, Celebrate our family! Have an event with any constituent of the AHEPA Family and move (4) spaces. Send me a Blurb, a note, or a picture of your event or celebration and keep moving forward.

May will be the last incentive for the D-O-P-opoly Growth and Expansion game

I hope you all enjoyed playing and your continued help toward the growth of the Daughters of Penelope, I thank you.

Your Train Conductor,

Kathy Bizoukas

GVP

# D-O-P-opoly Leaderboard

(as of January 31, 2021)

*January's Incentive*

**Pay your National Obligations by January 31, 2021**

**For (3) points and (3) Property Spaces**



***Leading DOP-opoly with 16 Property Spaces***  
***(Landing on the D9 New England District Property)***  
**D12- Pleiades 50 Hammond, IN**



***In 2nd Place with 9 Property Spaces***  
***(Landing on the D5 Garden District Property)***  
**D23- Euphrosyne 292 Ottawa, ON**



***In a close 3rd with 8 Property Spaces***  
***(Landing on the D4 Power District Property)***  
**D2- Cassandra 372 Boca Raton, FL**



***Landing on D3 Capital Property***

(6 Property Spaces)

**D5- Altes 163 Trenton, NJ**



***Landing on AMTRAK RR Property***

(5 Property Spaces)

**D22- Icaria 175 Tacoma, WA (Gift Card earned)**

D25- Amaryllis 421 Paleo Psyhiko, GR had (7) moves but landed on a **CHANCE** Property. Unfortunately, they had to go back (3) spaces to the AMTRAK RR Property, but on the positive note, they earned a Gift Card

If your Chapter is not on the board this month, you still have your points, but since you had no activity in January, you start again at "GO"



**Congratulations!**

**We have (9) new Chapters added to the game  
(+3 points) Landing on D2 Citrus Property**

|      |              |                |
|------|--------------|----------------|
| D4-  | Astrea 444   | Ambridge, PA   |
| D6-  | Aega 357     | Blue Point, NY |
| D8-  | Orion 130    | Boston, MA     |
| D10- | Iphthime 066 | Detroit, MI    |
| D10- | Doris 157    | Bloomfield, MI |
| D10- | Dryas 169    | Saginaw, MI    |
| D11- | Calypso 013  | Cincinnati, OH |
| D14- | Eurydyce 021 | St. Paul, MN   |
| D20- | Anthos 395   | Torrance, CA   |

*See you all next month and until then,  
“Focus, Stay on Track, and Keep Moving Forward”*



Love in Theta Pi,  
Your Train Conductor,  
Kathy Bizoukas

Grand Vice President  
Growth & Expansion

# The Game of



## “D-O-P”-opoly

---

**THE IDEA OF THE GAME IS TO TRAVEL AROUND THE WORLD TO DOP LOCATIONS,  
<PASS GO AND COLLECT \$200.00>**

Become the D-O-P-opolist by Initiating, Reinstating, and collecting Membership Dues.

**Start from “GO”**

Move your Chapter/District Train around the board according to your monthly stats.

Move forward (1) space for each objective accomplished, but, when you reach a total of (5) members initiated or reinstated, you get a **BONUS** > Move *forward* to the closest Railroad Station Property.

Land on a RR Station Property and receive an *Amazon gift card* to use as your “celebration”

If you pay your entire Chapter’s Per Capita for **2020, by December 1**, you receive (5) points and move forward (5) spaces

If you land on COMMUNITY CHEST, you will see a reminder with no Penalty- Just a resting place

*“Have you Paid your Dues/Obligations”*

If you land on CHANCE “GO BACK (3) SPACES

For each month of no activity, you will **GO DIRECTLY TO JAIL**

**(DO NOT PASS GO, DO NOT COLLECT \$200.00)**

When your activity begins again, you will start over from “GO”

Pay your **2021** obligations **by Jan 31**-Receive (3) Points and Move Forward (3) spaces

Schedule a Growth + Expansion “ZOOM” Presentation with me and receive (5) extra points

**The FIRST Chapter (only) to Pass Go> Collects \$200.00**

**GOOD LUCK!**

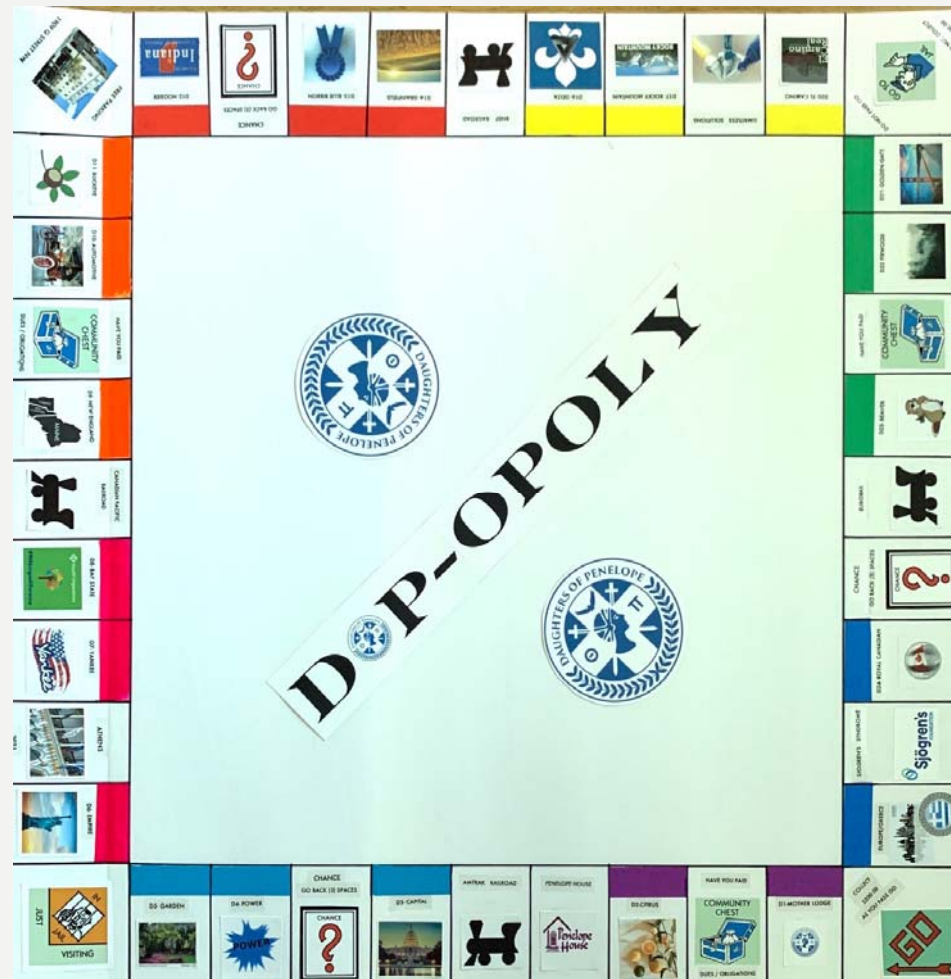
**Game will officially begin November 1, 2020**

WELCOME TO  
THE GAME  
OF  
“D-O-P”-OPOLY

KEEP MOVING FORWARD..PASS  
“GO” COLLECT \$200.00



# OVERVIEW OF "D-O-P"-OPOLY BOARD



# Let's take a Walk around the Board

Start with GO..  
Stop in at a beautiful  
D5 Garden





# Turn the First Corner



Hopefully, you will only be visiting the Jail  
Continue traveling from New York to  
The Buckeye District

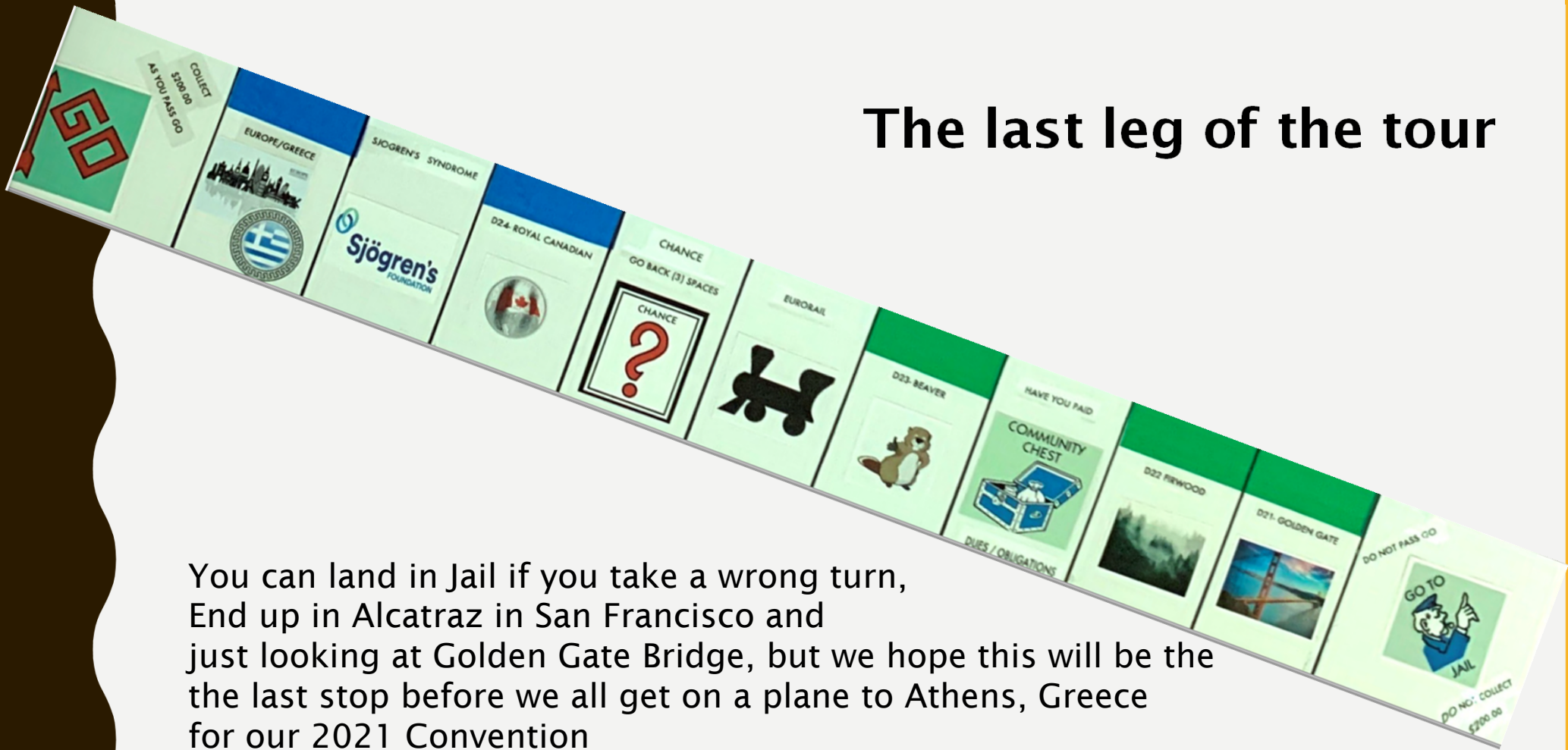
# Let's continue our tour around the world



Park at HQ until you can catch a train  
We're in the Midwest now,  
my home state of Indiana, continuing down Rte 66  
to find ourselves in the states of District El Camino Real

## The last leg of the tour

You can land in Jail if you take a wrong turn,  
End up in Alcatraz in San Francisco and  
just looking at Golden Gate Bridge, but we hope this will be the  
the last stop before we all get on a plane to Athens, Greece  
for our 2021 Convention



# The Game of



## “D-O-P”-opoly

---

THE IDEA OF THE GAME IS TO TRAVEL AROUND THE WORLD  
TO DOP LOCATIONS,  
<PASS GO AND COLLECT \$200.00>

Become the D-O-P-opolist by Initiating, Reinstating, and collecting Membership Dues.  
Start from "GO"

Move your Chapter/District Train around the board according to your monthly stats.

Move forward (1) space for each objective accomplished, but,  
when you reach a total of (5) members initiated or reinstated, you get a BONUS  
Move forward to the closest Railroad Station Property.

If you pay your entire Chapter's Per Capita for 2020, by December 1,  
you receive (5) points and move forward (5) spaces

For each month of no activity, you will **GO DIRECTLY TO JAIL**  
(**DO NOT PASS GO, DO NOT COLLECT \$200.00**)  
When your activity begins again, you will start over from “GO”

Pay your **2021** obligations **by Jan 31-**  
Receive (3) Points and Move Forward (3) Spaces

Schedule a Growth + Expansion “ ZOOM” Presentation with me and  
receive (5) extra points

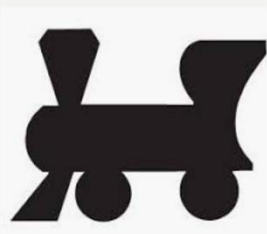
**The FIRST Chapter (only) to Pass Go> Collects \$200.00**

**GOOD LUCK**

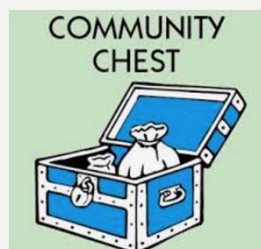
**Game will officially begin November 1, 2020**



## Railroads, Chance and Community Chest Properties



Land on a RR Station Property and receive an *Amazon gift card* to use as your “celebration”



If you land on COMMUNITY CHEST, you will see a reminder, with no Penalty, Just a resting place  
*“Have you Paid your Dues/Obligations”*



If you land on CHANCE “*GO BACK (3) SPACES*”

## Connection / Communication is important

Each District will be represented by a Passenger Train.  
Each chapter will be attached to their District Train as they have membership activity





How do you get to move your passenger train faster?

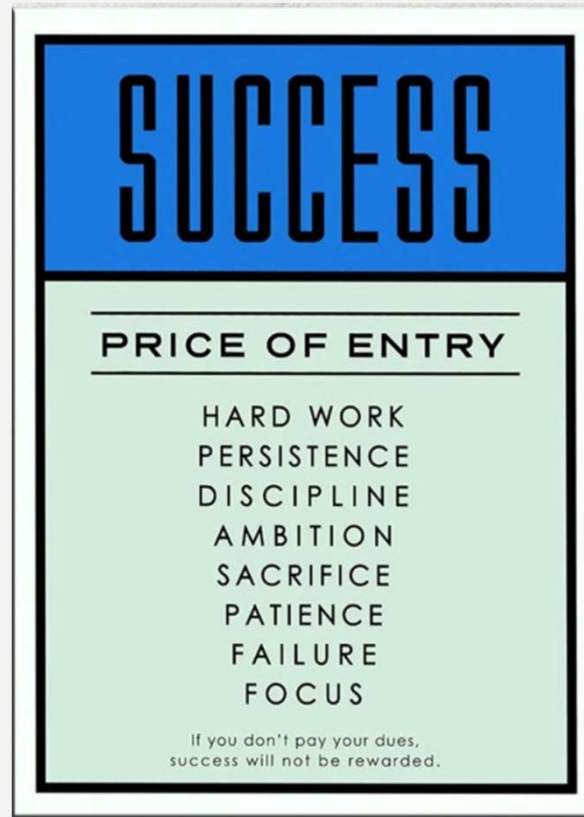


- \_ New members
- \_ Reinstated members
- \_ Pay your Dues
- \_ Pay your Obligations
- \_ Challenges for extra points

Your job is to Initiate, Reinstate and Pay your Dues and Obligations  
I will keep track of everything  
Every month there will be a Leaderboard so you can all see how you are doing  
And the first Chapter to pass go will receive \$200.00




# “Membership Matters”




|                     |                     |               |                         |                        |                      |                   |                            |                            |                       |              |
|---------------------|---------------------|---------------|-------------------------|------------------------|----------------------|-------------------|----------------------------|----------------------------|-----------------------|--------------|
| <p>FREE PARKING</p> | <p>D12. HOOSIER</p> | <p>CHANCE</p> | <p>D13. BLUE RIBBON</p> | <p>D14. GRAINFIELD</p> | <p>BNSF RAILROAD</p> | <p>D16. DELTA</p> | <p>D17. ROCKY MOUNTAIN</p> | <p>LIGHTLESS SOLUTIONS</p> | <p>D20. EL CAMINO</p> | <p>GO TO</p> |
|---------------------|---------------------|---------------|-------------------------|------------------------|----------------------|-------------------|----------------------------|----------------------------|-----------------------|--------------|

|                    |                        |   |                        |                                      |                      |                   |               |                   |
|--------------------|------------------------|---|------------------------|--------------------------------------|----------------------|-------------------|---------------|-------------------|
| <p>D11. BUCCHE</p> | <p>D10. AUTOMOTIVE</p> | <p>HAVE YOU PAID<br/>COMMUNITY CHEST<br/>DUES / OBLIGATIONS</p> | <p>D9. NEW ENGLAND</p> | <p>CANADIAN PACIFIC<br/>RAILROAD</p> | <p>D8. BAY STATE</p> | <p>D7. YANKEE</p> | <p>ATHENS</p> | <p>D6. EMPIRE</p> |
|--------------------|------------------------|---|------------------------|--------------------------------------|----------------------|-------------------|---------------|-------------------|



# D-P-OPOLY



|                         |                      |   |                    |                 |                                      |                            |  |                      |
|-------------------------|----------------------|---|--------------------|-----------------|--------------------------------------|----------------------------|--|----------------------|
| <p>D21. GOLDEN GATE</p> | <p>D22. FIREWOOD</p> | <p>HAVE YOU PAID<br/>COMMUNITY CHEST<br/>DUES / OBLIGATIONS</p> | <p>D23. BEAVER</p> | <p>EUROBALL</p> | <p>CHANCE<br/>GO BACK (3) SPACES</p> | <p>D24. ROYAL CANADIAN</p> | <p>SJOGREN'S SYNDROME<br/>Sjogren's FOUNDATION</p> | <p>EUROPE/GREECE</p> |
|-------------------------|----------------------|---|--------------------|-----------------|--------------------------------------|----------------------------|--|----------------------|

|                      |
|----------------------|
| <p>JUST VISITING</p> |
|----------------------|

|                   |                  |                                      |                    |                        |                       |                   |   |                         |
|-------------------|------------------|--------------------------------------|--------------------|------------------------|-----------------------|-------------------|---|-------------------------|
| <p>D5. GARDEN</p> | <p>D4. POWER</p> | <p>CHANCE<br/>GO BACK (3) SPACES</p> | <p>D3. CAPITAL</p> | <p>AMTRAK RAILROAD</p> | <p>PENELOPE HOUSE</p> | <p>D2. CITRUS</p> | <p>HAVE YOU PAID<br/>COMMUNITY CHEST<br/>DUES / OBLIGATIONS</p> | <p>D1. MOTHER LODGE</p> |
|-------------------|------------------|--------------------------------------|--------------------|------------------------|-----------------------|-------------------|---|-------------------------|

|                                       |
|---------------------------------------|
| <p>COLLECT \$50-50 AS YOU PASS GO</p> |
|---------------------------------------|